

PROFILE

2025-2026



A Message from the Chairman



At present, Japan is facing an increasingly declining birthrate and labor shortages in rural areas as a result of the overconcentration of people and industry in Tokyo, and the impact of US tariff policy has brought uncertainty to the economic outlook.

In Central Japan, there are particular concerns about future tariffs on the automobile industry, including automobile parts.

Despite these circumstances, it is important to reliably keep up with the trends of the times, to determine the direction in which we should move, and to move forward robustly toward the realization of a bright future for Central Japan.

In February this year, the Central Japan Economic Federation established Central Japan Vision 2050 as a compass to lead us toward the realization of a rich, sustainable society around 2050.

In order to lead this path toward a trajectory of growth, this fiscal year we will position three issues—enhancement of wide-area collaboration, promotion of open innovation, and development and active participation of human resources—as pillars of activity to promote efforts.

In particular, we will focus on enhancing disaster prevention and mitigation measures, promoting wide-area tourism, activities that contribute to correction of the overconcentration in Tokyo, as well as on efforts toward smartification of the manufacturing industry through the simultaneous promotion of Green Transformation and Digital Transformation and the creation of systems that allow the human resources who will forge the future to grow and play active roles in the region.

Furthermore, as driving forces for making robust progress in tackling the three pillars, we will begin efforts to further promote the semiconductor industry in Central Japan.

Our role as a wide-area economic organization is to open the path for improving the charms and competitiveness of Central Japan through activities that connect industry, academia, government, finance, and local areas in the region and draw out challenges and cooperation.

With our members as our source of power, we will continue to take on challenges as a “Chuokeiren that connects voices and strengths to achieve its goals.”

We would like to ask for your continued support and cooperation.

Satoru Katsuno, Chairman
Central Japan Economic Federation

Central Japan Economic Federation (Chukeiren) at a Glance

Corporate Name

Central Japan Economic Federation

Establishment

April 2, 1951

Members

Approximately 800 entities (approx. a quarter of which are in the manufacturing industry) comprising businesses, educational corporations, economic bodies, and others engaging in economic activities mainly in Central Japan

Area of Activity

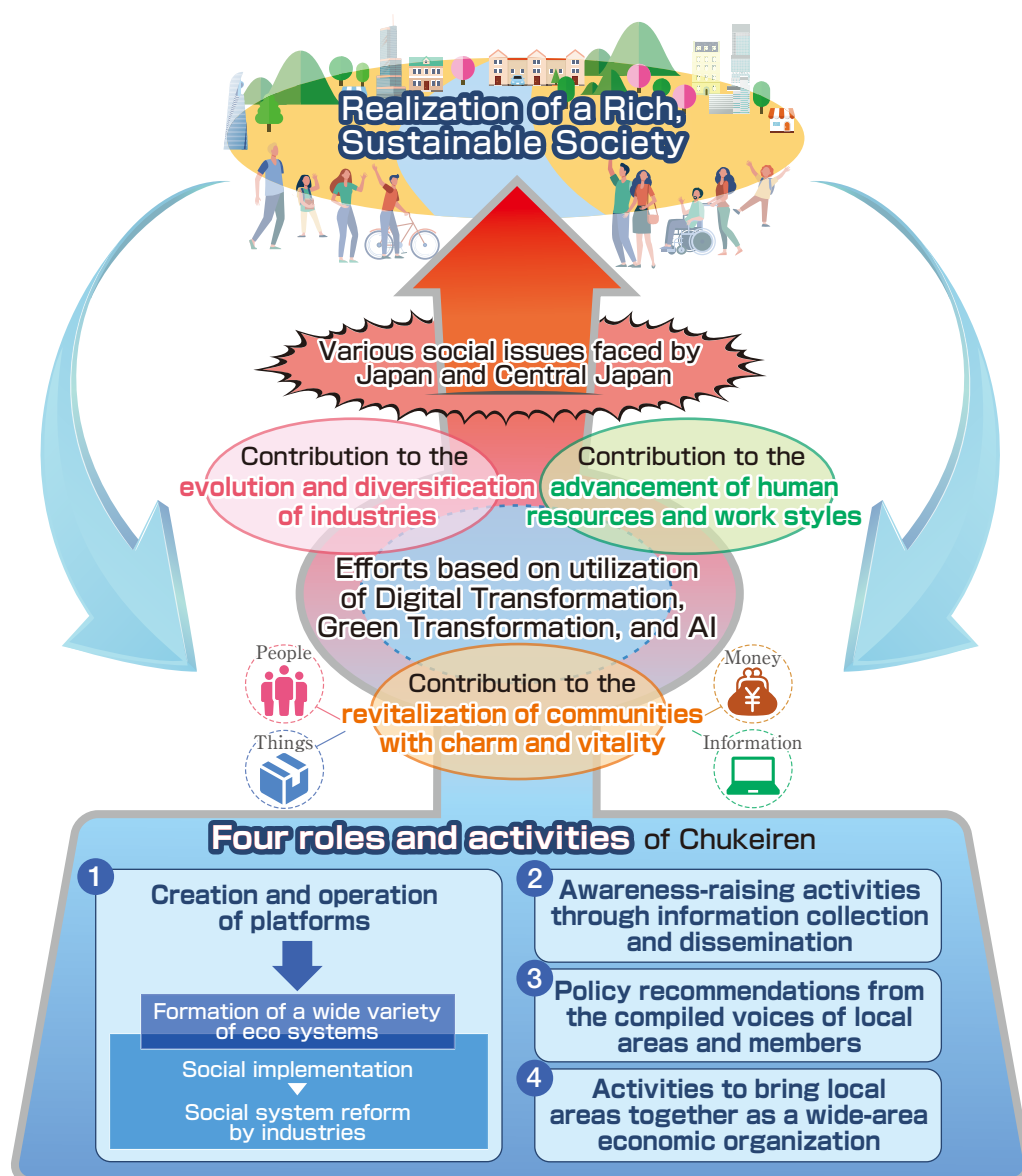
5 prefectures in Central Japan including Nagano, Gifu, Shizuoka, Aichi, and Mie

History of Establishment

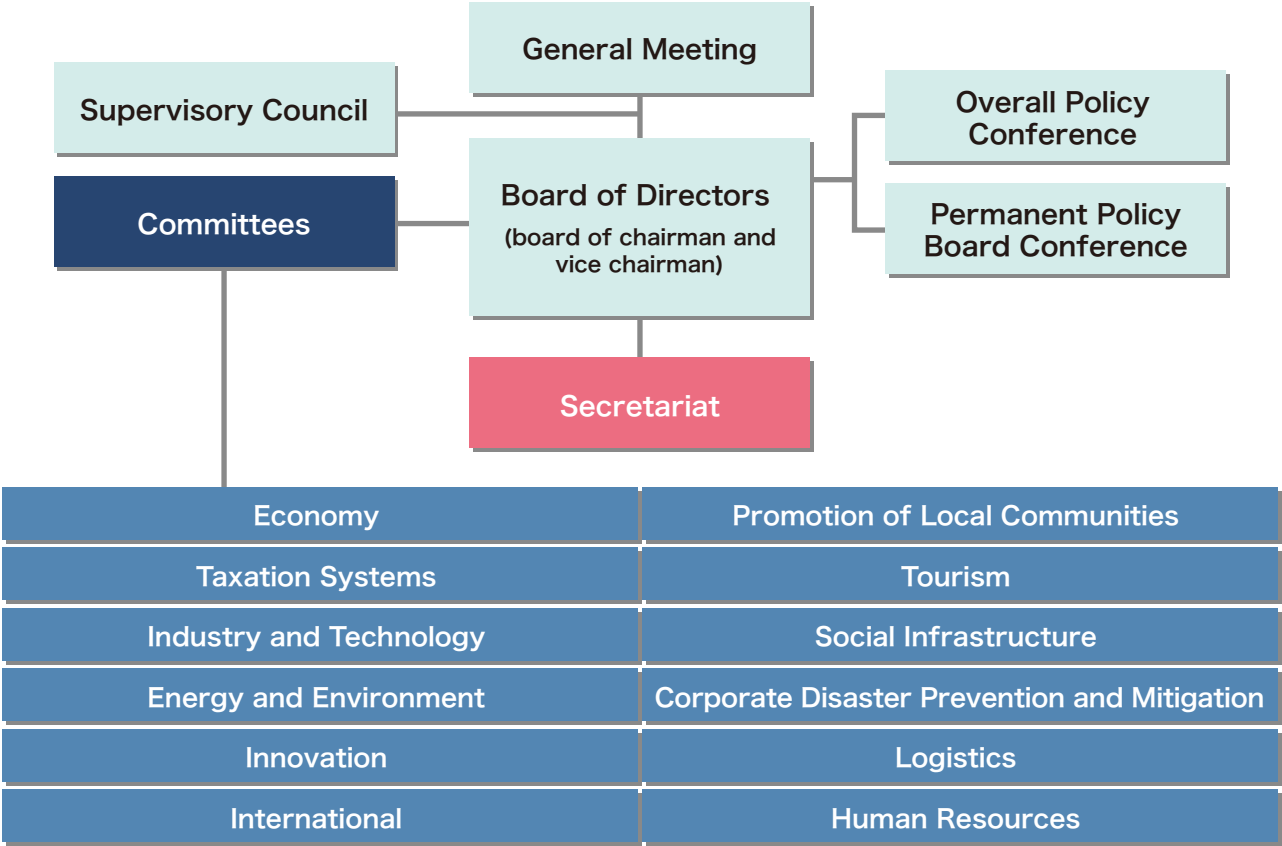
In 1951, a time when the country was still experiencing turmoil after the war and there was a sense of uncertainty about the future, the Central Japan Economic Federation was founded with the strong determination of the Central Japan business community to face challenges as one and support the development of the Central Japan region.

Role

As a wide-area economic organization that “unites the voices and connects the strengths” of industry, academia, government, finance, and local areas in the region, Chukeiren will contribute to the continuous development and improvement of the competitiveness of Central Japan through the creation of platforms, information sharing, and the submission of policy recommendations that convey a unified voice for local areas.



Organizational chart



Secretariat organization chart



Chairman



Satoru KATSUNO
Chairman of the Board of Directors
Chubu Electric Power Co., Inc.

Vice Chairmen



Koei TSUGE
Advisor
Central Japan Railway Company



Yukio MURASE
Chairman of the Board of Directors
The Juroku Bank, Ltd.

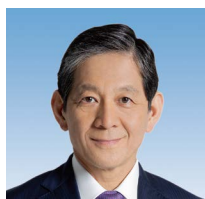


Takashi ANDO
Chairman of the Board
Representative Director
Nagoya Railroad Co., Ltd.

Vice Chairmen



Taku OSHIMA
Chairman
NGK Insulators, Ltd.



Takuya NAKATA
Chairman
Yamaha Corporation



Goro KAMINO
President and Representative Director
SALA Corporation



Akira ONISHI
Director
Toyota Industries Corporation



Hitoshi ANDO
President
Japan Transcity Corporation



Masaki MATSUSHITA
President
The Hachijuni Bank, Ltd.



Ichiro TAKAHARA
Member of the Board of Directors, Deputy President
MUFG Bank, Ltd.



Takeshi AOKI
Chairman of the Board of Directors
IBIDEN Co., Ltd.



Yoichi MIYAZAKI
Executive Vice President
Toyota Motor Corporation



Masakazu SUGIURA
President
The Hyakugo Bank Ltd.

Director



Kingo HAYASHI
President and Director
Chubu Electric Power Co., Inc.



Yasunori OGAWA
Chairman and Director
Seiko Epson Corporation



Hisashi SHIBATA
President & CEO
Shizuoka Financial Group, Inc.



Seiichi MATSUO
Chancellor, Tokai National
Higher Education and Research System

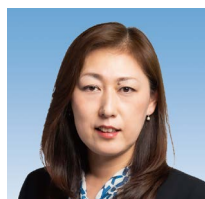


Soichiro NAKAMURA
President
Shinshu University

Director



Noriyuki HIRAMITSU
Managing Executive Officer and President of Nagoya Works
Nippon Steel Corporation



Naoko KITAGAWA
Representative Director and President
Tokai Tokyo Securities Co., Ltd.

Auditor

Masami OTSU
President
Kawakita Denki Kogyo co., Ltd.

Masaki SUGIURA
Chairman and Representative Director
Chubu-Nippon Broadcasting Co., Ltd.

Shinsuke KAGAMI
Representative Director, Executive Vice President
Toho Gas Co., Ltd.

Naoki FUJITA
Managing Executive Officer
Mizuho Bank, Ltd.

Secretariat Executives

Takehito Hiramatsu
Director General

Fumitake MIYAMOTO
Managing Director & Secretary-General

Keiji NEMOTO
Managing Director

Committees

Chukeiren has established 12 committees, each of which engages in a variety of activities, including conducting survey and research and making recommendations on socioeconomic issues at home and abroad. Chukeiren also promotes interaction among members through our activities.

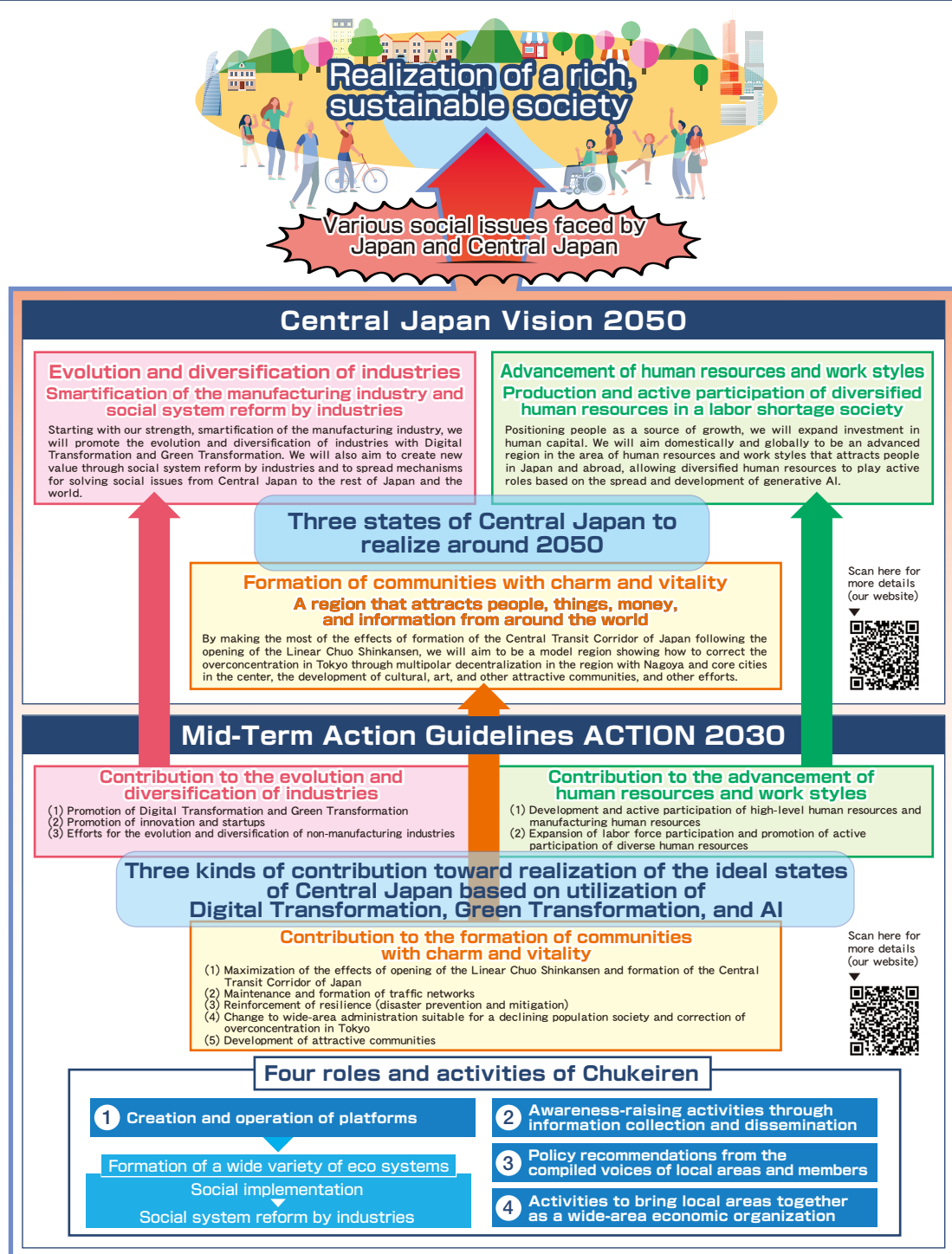
Economy <ul style="list-style-type: none"> Conduct surveys and researches, submit recommendations and requests, and engage in promotional activities in the area of economic policies, social systems, etc. 	Promotion of Local Communities <ul style="list-style-type: none"> Consider regional revitalization measures through member-relevant agency collaboration Conduct surveys and researches, submit recommendations and requests and promote activities on community development and vitalization of industries which support the region
Taxation Systems <ul style="list-style-type: none"> Conduct surveys and researches, submit recommendations and requests in the area of taxation reform and subsidies which would benefit industrial development and promotion 	Tourism <ul style="list-style-type: none"> Conduct surveys and researches, submit recommendations and requests, and engage in activities to promote tourism
Industry and Technology <ul style="list-style-type: none"> Conduct surveys and researches, submit recommendations and requests, and engage in promotional activities to support advancement and promotion of next-generation capacity for travel (including advances in air travel and transport) and conduct surveys and researches on new industrial fields Promote surveys and researches and activities for the construction of an industry-academia joint research frame 	Social Infrastructure <ul style="list-style-type: none"> Conduct surveys and researches and submit recommendations and requests to develop a comprehensive transportation network
Energy and Environment <ul style="list-style-type: none"> Conduct surveys and researches, submit recommendations and requests, and engage in promotional activities in the area of energy and environmental protection including decarbonization and circular economy 	Corporate Disaster Prevention and Mitigation <ul style="list-style-type: none"> Conduct surveys and researches, submit recommendations and requests, and engage in promotional activities in the area of disaster prevention and mitigation
Innovation <ul style="list-style-type: none"> Conduct surveys and researches, submit recommendations and requests, and engage in promotional activities to accelerate innovation and create new industries Enhance the functions of innovation and startup in Central Japan 	Logistics <ul style="list-style-type: none"> Conduct surveys and researches, submit recommendations and requests on the ideal approaches for logistics that contribute to reducing greenhouse gas emissions and dealing with labor shortages
International <ul style="list-style-type: none"> Conduct surveys and researches, submit proposals, and engage in promotional activities to enhance the global competitiveness of industry Conduct surveys and researches, submit proposals, and engage in promotional activities to promote the active participation of foreign human resources and realize a multicultural society 	Human Resources <ul style="list-style-type: none"> Conduct surveys and researches, submit recommendations and requests, and engage in promotional activities in the area of human resources which support the region and local industries

Recent recommendations and reports

Urgent recommendation:	Toward resilient and sustainable water and sewerage services: After the Noto Peninsula Earthquake and the road collapse accident in Yashio City (March 2025) / Social Infrastructure Committee
Report:	Development of charming communities for young people by attracting live performances to Central Japan (March 2025) / Research Department
Recommendation:	Central Japan Vision 2050 (February 2025) / Economy Committee
Recommendation:	Opinions about the 2025 taxation system revision (September 2024)/ Taxation Systems Committee
Recommendation:	Promotion of social implementation toward the realization of carbon neutrality (September 2024) / Energy and Environment Committee

Overview of Mid-Term Action Guidelines ACTION 2030 for the Realization of Central Japan Vision 2050

In the midst of the ongoing significant trend toward taking measures in response to population decline and the global environment, Chuokeiren established Central Japan Vision 2050 with the aim of Japan realizing a “**rich, sustainable society**” around 2050. In this vision, the issues of Japan and directions of measures are summarized, and three pillars—**evolution and diversification of industries**, **advancement of human resources and work styles**, and **formation of communities with charm and vitality**—are set out as contributions that Central Japan can make, which means, the ideal states of Central Japan. In addition, we established Mid-Term Action Guidelines ACTION 2030 as an action plan for 2030 in order to organize the four roles and activities of Chuokeiren and the specific efforts that will contribute to realization of the ideal states of Central Japan in our vision. Looking ahead, we will promote efforts that can contribute to Central Japan in accordance with these guidelines so Japan will become a **rich, sustainable society**.





1. Recognizing the Surrounding Environment

With the Russian invasion of Ukraine, the Middle East situation, the instability of the free trade system, and other issues around the world, the current global environment is in chaos. Also in Japan, in addition to a declining population; ageing, low-birth rate society; overconcentration of people and industry in Tokyo; and other long-standing structural issues, we are facing increasing prices, labor shortages in rural areas, and a variety of other challenges.

For Central Japan to continuously grow under these situations, it is essential to increase the competitiveness of the entire region through the creation and implementation of innovations aimed at solving social issues, the active participation of diverse human resources, the creation of communities with charm, and other efforts by utilizing a strength of our region, the collaboration of industry, academia, government, and finance, to breakthrough.

2. Action Policy for Fiscal Year 2025

In February 2025, Chukeiren announced Central Japan Vision 2050 (referred to as "Vision" below). This Vision set three goals as ideal states that Central Japan should aim for and presented necessary efforts for each of them in order for Japan to be a rich, sustainable society around 2050 even in the midst of a declining population and the deterioration of the global environment. These goals were the evolution and diversification of industries, advancement of human resources and work styles, and formation of communities with charm and vitality. In June, we established ACTION 2030 as Mid-Term Action Guidelines of Chukeiren for realization of the three ideal states presented in this Vision. In these guidelines for the next five years (fiscal years 2025 - 2029), we set **contribution to the evolution and diversification of industries**, **contribution to the advancement of human resources and work styles**, and **contribution to the formation of communities with charm and vitality** as the pillars of our activities and presented specific efforts based on the utilization of Green Transformation, Digital Transformation, and AI.

Fiscal year 2025, the first year in this mid-term period, is an important year in taking a step toward a new stage. As a "connector" between industry, academia, government, finance and local areas, we will contribute to the realization of **a rich, sustainable society** by making the most of the charms and regional strengths of Central Japan, utilizing the foundation and experience that we have cultivated so far.

3. Main Business Activities for Fiscal Year 2025

Contribution to the evolution and diversification of industries

For the evolution and diversification of industries through the promotion of Digital Transformation and Green Transformation, we will conduct surveys and researches aimed at smartification of the manufacturing industry, as well as promote the utilization of digital twins, promote industry-academia collaboration for social implementation of next-generation mobility, including decarbonization technologies and air mobility, form innovation ecosystems, promote wide-area tourism, and implement other efforts.

Contribution to the advancement of human resources and work styles

We will work to promote updating training and retraining education with industry-academia collaboration, as well as conduct surveys and researches for the expansion of new work styles, such as having a second job, STEAM* education, exchange programs for the settlement of foreign students in communities, and other efforts.

*An educational approach for comprehensive learning in five fields: science, technology, engineering, arts, and mathematics.

Contribution to the formation of communities with charm and vitality

In addition to discussions for sharing and solving wide-area issues through industry-academia-government-finance collaboration, we will conduct surveys and researches about the ideal state for systems of governance that suit living areas and economic zones. We will also host events that contribute to sharing the charms of Central Japan and will support learning for children from foreign backgrounds. Furthermore, we will lobby the central government for infrastructure development that will contribute to maximization of the effects of opening the Linear Chuo Shinkansen and the reinforcement of water and sewerage systems. Moreover, we will work to raise awareness to contribute to the enhancement of disaster mitigation measures, as well as implement other efforts.

Activities that form the basis of our business

We will work to make policy recommendations that reflect the voices of local areas and members, to support the success of international events held in Central Japan, to reinforce the organizational foundation of Chukeiren, etc.

Key Activities

Contribution to the Evolution and Diversification of Industries

1 Promotion of Digital Transformation and Green Transformation, Activation of Open Innovation, and Smartification of the Manufacturing Industry

● Promotion of social implementation that leads Digital Transformation and Green Transformation

- Promoting the social implementation of technologies that contribute to decarbonation through industry-academia collaboration support for COI-NEXT*2 adopted projects and momentum creation activities by hosting a “Carbon Neutrality Co-creation Symposium” in cooperation with C²-FRONTS*1
- Lobbying the central government to develop supply infrastructure and promoting awareness-raising activities that contribute to the spread of hydrogen and ammonia use in local areas with the aim of building hydrogen and ammonia supply chains in Central Japan



Carbon Neutrality Co-creation Symposium

*1 Collaboration and Co-creation Framework of National Universities in Tokai and Shinshu (Nagano Prefecture): comprises all the national universities and technical colleges in the five prefectures of Central Japan

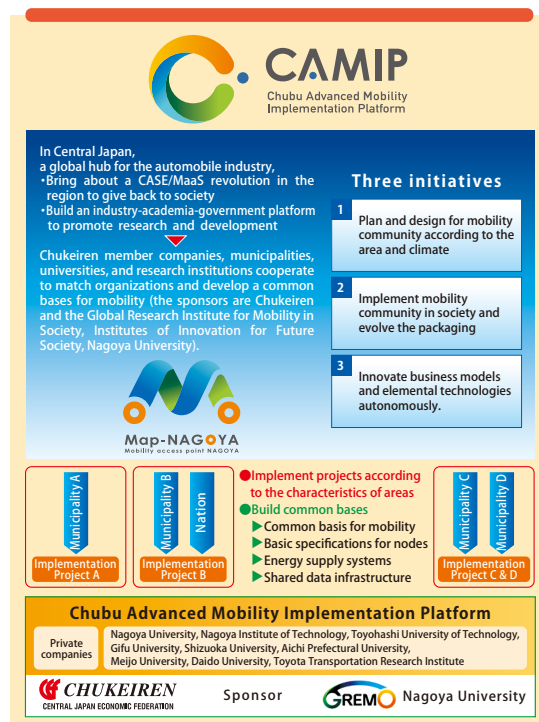
*2 “Co-creation Place Formation Support Program” led by the Japan Science and Technology Agency (JST)

● Surveys and researches for smartification of the manufacturing industry

- Organization of specific measures for Chukeiren in the future through visits to and interviews with leading-edge companies, lectures by specialists, and other activities in order to realize the evolution and diversification of industries based on smartification of the manufacturing industry, which is one of the pillars of Central Japan Vision 2050
- Trial operation of a platform in collaboration with regional industry, academia, and government for industrial use of digital twin technologies. Promoting the hosting of events to share use cases, providing training programs for the development of specialist human resources, and other activities to prepare for full-fledged operation

● Social implementation of next-generation mobility with industry-academia-government collaboration

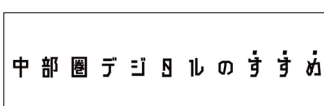
- Based on activities within CAMIP*, participating in community development that utilizes next-generation mobility (such as automated driving and air mobility), supporting the demonstration and implementation activities promoted by each area, collecting and analyzing information held by stakeholders, developing good practices, and collaborating with COI-NEXT to solve issues
- Clarifying issues for the demonstration and implementation of drones in the air mobility field, supporting the organization of demonstration projects for the social implementation of flying vehicles, and promoting momentum building through events



*Chubu Advanced Mobility Implementation Platform: Co-founded by the Central Japan Economic Federation and Nagoya University in May 2021 to promote more effective industry-academic-government collaboration in order to encourage Central Japan to continue to function as a global hub for the next-generation mobility industry in the future

● Digital literacy improvement and enhancement of cyber security measures

- Providing courses to learn digital skills and operating a website to provide information about digital literacy training in local areas
- Hosting awareness-raising events for the enhancement of corporate cyber security measures



Website that provides opportunities for digital learning



Scan here for more details



Chukeiren digital technology lecture

Key Activities

2 Promotion of Innovation and Startups

● Promotion of formation activities for startup ecosystems

- Promoting activities in the second-term global hub city consortium of the Cabinet Office (Central Japan Startup Ecosystem Consortium). Expanding the areas of activities, hosting global events, and other activities
- Creating mechanisms to promote collaboration with major innovation startup support bases in Central Japan

● Development of innovation-creating human resources and promotion of cross-border activities of human resources in Nagoya Innovator's Garage

- Providing a place for co-creation and practical learning, including human resource development programs for business companies and exchanges among different types of businesses and fields
- Providing opportunities to take on challenges and learn for students who aim to become entrepreneurs and workers exploring a wide range of careers



Partnership-style support program for the creation of new businesses for companies

What is Nagoya Innovator's Garage (NIG)?

Hub co-founded in July 2019 by Chukeiren and Nagoya City designed to create innovation in Central Japan

Location
Nadaya Park 3 and 4F,
3-18-1 Sakae, Naka-ku, Nagoya

Total number of visitors
178,539 visitors (as of June 8, 2025)

Number of events held and participants in 2024
449 events / 25,483 participants in total

NIG defines the **Central Japan Innovation Ecosystem** as “a system for the continuous evolution and diversification of industries through co-creation and open innovation in Central Japan.” To create new businesses and new value, it develops a variety of programs for business companies and entrepreneurs via four stages: Mind Formation, Attention and Discovery, Fusion and Growth, and Co-Creation and Practice.

- Growth support program: provided for business companies and entrepreneurs
- Connecting the participants of each program through social events: range of connections
- Increasing the quality and speed of growth through continuous mentoring: depth

For business companies

8 programs

Business and value creation

↑ Continuous mentoring ↑

4 social events

For entrepreneurs

6 programs

3 Promotion of Tourism

● Promotion of wide-area tourism

- Building a platform for enhancing collaboration between local governments and communicating information through various conference bodies
- Hosting lectures and study tours in the Tourism Committee to promote understanding of the promotion of wide-area tourism and momentum building
- Supporting the success of Tourism EXPO Japan 2025 and supporting efforts to attract events to be held in the future that will contribute to the promotion of tourism in Central Japan

● Support for activities of the Central Japan Tourism Association

- Supporting reinforcement of the foundation of the Central Japan Tourism Association (wide-area collaboration DMO), which serves as the control tower for tourism policies in Central Japan



Study tour of townscape preservation activities in Tsumago-juku, Nagano Prefecture

Key Activities

4 Surveys, Researches, and Recommendations Concerning Economic Policies and Socioeconomic Systems

- **Expansion of surveys and researches, recommendations and requests, and promotion activities concerning economic policies and social systems**
 - Conducting surveys and researches for the evolution and diversification of industries based on smartification of the manufacturing industry, which is one of the pillars of Central Japan Vision 2050, and organizing specific measures to be taken by Chukeiren in the future
 - Creating and publishing reports concerning trends in the economy and industries and issues in communities
 - Publishing the current situation and reviews of business confidence in Central Japan, economic research monthly reports, and basic data sets about the Central Japan region
- **Expansion of surveys and researches, recommendations, and lobbying for taxation system revisions that contribute to promotion of the regional economy and industries**
 - Formulating and publishing opinions about the 2026 taxation system revision based on the activities of Chukeiren committees and lobbying the central government, Diet members, and local governments to realize them
 - Providing information to members to promote understanding and use of the contents of taxation system revisions

5 Promotion of International Economic Exchanges

- Dispatching overseas economic delegations (to Austria, Switzerland, and Italy in fiscal year 2024, to New Zealand and Australia in fiscal year 2025)
- Planning and hosting lectures on themes concerning the latest international economy and international affairs and economic exchange events jointly or in cooperation with overseas organizations



Discussions about economic and urban development and startups with the Vienna Chamber of Commerce



Discussions about urban development and international exchanges with the Torino City Council

Contribution to the Advancement of Human Resources and Work Styles

1 Human Resource Development

- **Promoting activities that lead to the transformation of work styles and education to respond to changes in the social environment**
 - Grasping needs for updating training and retraining education focused on SMEs and trialing and implementing industry-academia collaboration and matching
 - Promoting and expanding the use of career education co-creation programs in which member companies send lecturers to member universities
 - Conducting surveys and researches that contribute to workers having a second job and expansion of STEAM education and communicating good practices and related information

2 Active Participation of Diverse Human Resources

- **Promotion of the active participation of foreign human resources through industry-academia-government collaboration**
 - Planning and hosting events for the active participation and retention of international human resources in Central Japan, including exchange meetings for mutual understanding between businesses and international students



Exchange meeting for foreign students and companies

Contribution to the Formation of Communities with Charm and Vitality

1 Promotion of Wide-area Collaboration

- **Enhancement of wide-area industry-academia-government collaboration**
 - Hosting of a wide-area industry-academia-government collaboration working group by businesspeople in preparation for the 4th Central Japan Wide-area Industry-Academia-Government Cooperation Council. Discussing the creation of new mechanisms aimed at the sharing of wide-area issues and promotion of discussions and activities to solve issues by industry, academia, government, and finance



The Central Japan Wide-area Industry-Academia-Government Cooperation Council

Key Activities

● Surveys and researches concerning systems of governance that suit living areas and economic zones

- Conducting surveys and researches about systems of governance suitable for the coming era based on a declining population and the actual conditions of people and logistics flows

2 Creation of Charms of Central Japan

● Discovery of charms of Central Japan and communicating this information

- Hosting of events by Nadeshiko-no-kai, an association that speaks out about the charms of Central Japan, under the theme of “creating new charms of Central Japan” and communicating information through a variety of media
- Hosting events to communicate the charms of the eastern Mikawa area in order to raise the popularity and added value of local products



Event to communicate the charms of products from the eastern Mikawa area

● Realization of a multicultural society

- Continuing and expanding activities for matching of corporate volunteers with Japanese language/learning classes and encouraging companies to secure and expand venues for such classes with the aim of supporting Japanese language/learning classes for pupils with a foreign background



Matching event for connecting corporate volunteers with Japanese language/learning classes

3 Maintenance and Development of Social Infrastructure

● Early improvement of roads and ports and reinforcement of the resilience of daily infrastructure

- Lobbying the central government and ruling party in cooperation with local governments and others to realize our Vision for the Transportation Network in Central Japan (published in March 2022) and report titled “Development of Road Networks that Contribute to Maximizing the Effects of the Central Transit Corridor of Japan” (published in March 2024)
- Lobbying the central government and ruling party to realize our recommendation titled “Toward Resilient and Sustainable Water and Sewerage Service” (published in March 2025)
- Starting surveys and reviews to formulate our Vision for the Transportation Network in Central Japan (tentative name) for the next term



Lobbying for the realization of resilient and sustainable water and sewerage services

● Centrair functional enhancements and convenience improvements

- Lobbying the central government and ruling party in cooperation with local stakeholders in order to achieve steady progress in preparations for the alternate runway
- Implementing measures to expand passenger/cargo demand for Centrair through the Central Japan International Airport Promotional Council and conducting airport sales to expand the aviation network



Lobbying by the Chubu Centrair International Airport Second Runway Construction Promotional Association

● Building of sustainable logistics

- Conducting surveys and researches on issues faced by the logistics industry and the impacts of revision of two laws related to logistics and following up on our recommendation titled “For Development of Sustainable Logistics” (published in December 2023)
- Hosting of lectures with timely themes related to logistics and communicating information obtained from the government and industry organizations

4 Reinforcement of resilience

● Reinforcing disaster countermeasures

- Hosting lectures and study meetings to raise awareness about disaster mitigation for large-scale disasters, focused on countermeasures against Nankai megathrust earthquakes, and improve the level of disaster mitigation measures
- Efforts for lobbying to expand public assistance, such as the enhancement of infrastructure development from the view point of disaster prevention, which is difficult for the private sector to handle on its own



Corporate Disaster Prevention Committee lecture

Key Activities

Round-table Discussions with Regional Members Exchange of Opinions and Interactions in Each Central Japan Area

Chukeiren holds local member round-table discussions to grasp the needs of our members through the exchange of opinions on a variety of issues faced by each Central Japan area and utilize these needs in our activities. After the discussions, Chukeiren hosts social gatherings to deepen relationships.



Holding Lecture Meetings, Seminars, Social Events for Members, and Meetings with Other Economic Organizations

In addition to lecture meetings focusing on timely topics, Chukeiren conducts activities to facilitate interactions among members, such as a year-end party and a new year greeting meeting, for mutual exchanges among members and Tokai Region Economic Round-table Discussions, the purpose of which is to exchange opinions and promote interaction with the Japan Federation of Economic Organizations.

- Regular general meeting (June)
- West Japan Economic Conferences general meeting (meeting of regional economic federations from Hokuriku, Kansai, Chugoku, Shikoku, and Kyushu) (fall)
- Year-end party for members (December)
- New year's celebration meeting (January)
- Tokai Region Economic Round-table Discussions (with the Japan Federation of Economic Organizations) (February)
- Lecture meetings, seminars, networking events (from time to time)
- Overseas economic inspection tour (annually)
- Others

Examples of Lecture Meetings, Seminars, and Networking Events

- Carbon neutrality co-creation symposium
 - Digital human capital development seminar
 - Lecture meetings, seminars
 - Nadeshiko-no-kai (an association that speaks out about the charm of Central Japan) events
 - Cybersecurity event
- "Panel Discussion about the Environment and Innovation in the Future," moderated by Professor Sayuri Shirai from Keio University
 "Measures for Nankai Megathrust Earthquakes Learned from the Past to Prepare for the Future," Emeritus Professor Nobuo Fukuwa from Nagoya University
 Global seminar: "Charms of Central Europe as a Gateway to the European Market"

Many other events in addition to the ones above



Regular general meeting



Year-end party for members



Tokai Region Economic Round-table Discussions (press conference)

PR Activities

Chukeiren publicizes our activities through the issuance of our newsletter, “CHUKEIREN,” and economic research reports. In addition, our website and e-mail newsletters provide a variety of timely information about Central Japan, such as information about lecture meetings and seminars hosted by each committee exclusively for members, events hosted by us or Nagoya Innovator’s Garage, and messages from relevant agencies, foreign diplomatic missions, governmental agencies, and economic organizations.

Release of the Chairman’s Comments

Presenting summaries of the Chairman’s statements at regular press conferences and his comments



Release of Recommendations and Lobbying Activities

Presenting the details of recommendations and requests prepared by each committee

Release of Economic Research Reports

Conveying economic situations and economic indicators in Central Japan

Delivery of E-mail Newsletters

Delivering instantaneously information about events exclusively for members and other interesting information

Scan here for details or to register



Issuance of the “CHUKEIREN” Newsletter (Bimonthly)



Providing prefatory notes by representative members and columns only accessible in the newsletter, profiles of new members, and special reports on Central Japan

History

1951	Apr.	Central Japan Economic Federation (“Chukeiren”) was established	
1957	Mar.	“5-year Plan for Central Japan’s Economies” was published, proposing to invite an integrated steel maker to the Ise Bay area	
1958	Sep.	Chukeiren’s efforts led to the establishment of Tokai Seitetsu K.K. (now Nippon Steel Corporation Nagoya Works)	
1963	Apr.	“Framework for Integration of Three Tokai-region Prefectures” was published	
1969	Dec.	“Framework for Building an International Cargo Airport” was published	
1982	Apr.	“Vision of Central Japan for the 21st Century” was published	
1985	Feb.	“San-en-Nanshin (Eastern Aichi, Western Shizuoka, Southern Nagano) Triangle Framework” was published	
	Apr.	Japan Fine Ceramics Center was established	
1991	Feb.	The International Center for Environmental Technology Transfer was established	
	May	Chukeiren was converted to an incorporated association in order to consolidate its operational foundation	
1998	May	Central Japan International Airport Co., Ltd. was established	
2001	Nov.	“Direction of Central Japan in the 21st Century” was published	
	Nov.	Central Japan International Airport Promotional Council was established	
2005	Feb.	Chubu Centrair International Airport opened for operation	
	Mar.	The 2005 World Exposition, Aichi, Japan was held	
	Oct.	Greater Central Japan (Toyama, Ishikawa, Fukui, Nagano, Gifu, Shizuoka, Aichi, Mie, Gifu) Tourism Promotional Council was established	
2007	Apr.	Nanostructure Research Lab (Nano Technology Center) was established within the Japan Fine Ceramics Center	
2012	Jan.	The Shoryudo Project was launched	
	Apr.	Chukeiren converted to a general incorporated association	
2017	May	Established a regional collaboration DMO, the Central Japan Tourism Association (reorganized the Greater Central Japan Tourism Promotional Council expansively)	
2019	May	Central Japan Innovation Initiative was established	
	July	Nagoya Innovator’s Garage was launched	
2021	Jun.	70th Anniversary ceremony was held	
2022	July	Expansion of Nagoya Innovator’s Garage (Annex)	
2025	Feb.	Central Japan Vision 2050 was published	
2025	Jun.	Mid-Term Action Guidelines ACTION 2030 was published	



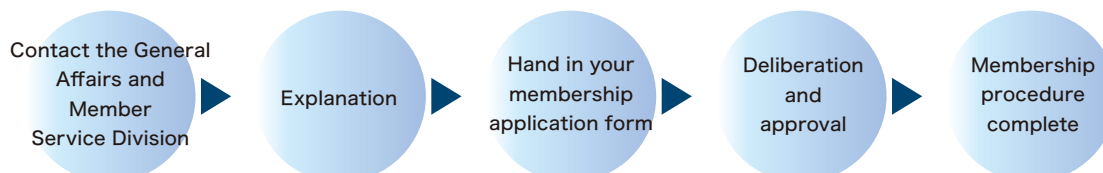
Membership Information

Steps to Membership and Membership Fee

Membership conditions

corporations and organizations that are sympathetic to the spirit of our activities for the development of Central Japan

Steps to Membership



Membership Fee

- Corporate Membership — JPY180,000
- Group Membership — JPY30,000

The membership fee is for a period of one year from April to March of the following year.
For the first year, the membership fee is charged on a monthly basis from the month you join to the following March.

Benefits of Membership

You can participate in committees and gatherings

By participating in committees and gatherings, your voice can be reflected in policy recommendations. Come work with us to create a better Central Japan region!

You can build networks

The Chukeiren membership comprises companies, educational institutions, and economic organizations representing Central Japan, as well as many companies playing active roles in Japan and abroad whose headquarters are located outside Central Japan, ranging from large companies to mid-sized companies and SMEs.
We organize many events conducive to networking, including committee meetings and networking events after them, as well as a year-end party for members and study tours. Please use them to build relationships.

You can obtain all kinds of information

Chukeiren holds committees, lectures, and symposiums from time to time and collaborates with the central government, local governments, universities, and others. Please use Chukeiren to collect all kinds of information from diverse fields.

For more information about the membership

Central Japan Economic Federation

General Affairs and Membership Services Division

10F, Nagoya Sakae Bldg. 5-1 Buhei-cho, Higashi-ku, Nagoya

461-0008 JAPAN

Tel: +81-(0)52-962-8091 Fax: +81-(0)52-962-8090

E-Mail info@chukeiren.or.jp

Scan here for more details
(our website)



chukeiren admission



Access



Scan here for
more details
(our website)



Scan here for
more details
(access)



10F, Nagoya Sakae Bldg. 5-1 Buhei-cho, Higashi-ku, Nagoya 461-0008 JAPAN
Tel: +81-(0)52-962-8091 Fax: +81-(0)52-962-8090

●By train

Take the Higashiyama Line or Meijo Line of the Nagoya Municipal Subway to Sakae Station or the Seto Line of Nagoya Railroad (Meitetsu) to Sakaemachi Station. We are a one-minute walk east of Exit 5 of the subway.

●By car

Take the Nagoya Expressway Ring Route or the Airport Route to the Toshincho Exit. We are three minutes west of the Toshincho Exit.



External appearance of Nagoya Sakae Building

*We have no visitor parking.

Please use a nearby pay parking lot, such as the Art Park Tokai parking lot, located in the basement of the Aichi Arts Center or the Chunichi Building's parking lot.



Concept for Our Logo



- Designed in 2001 based on the initials of the English name for Chuokeiren: Chubu Economic Federation*
- Symbolizes **dynamism** and **progress** in how the letters move in waves from left to right
- Conveys **interaction** and **cooperation** through the way the three letters—C, E and F—are tightly interconnected
- Expresses a **unifying force** using concentric circles in the design

Color: Bright Red (No Dullness)

Conveys that prosperity = **great times**

*Renamed as the Central Japan Economic Federation in 2017